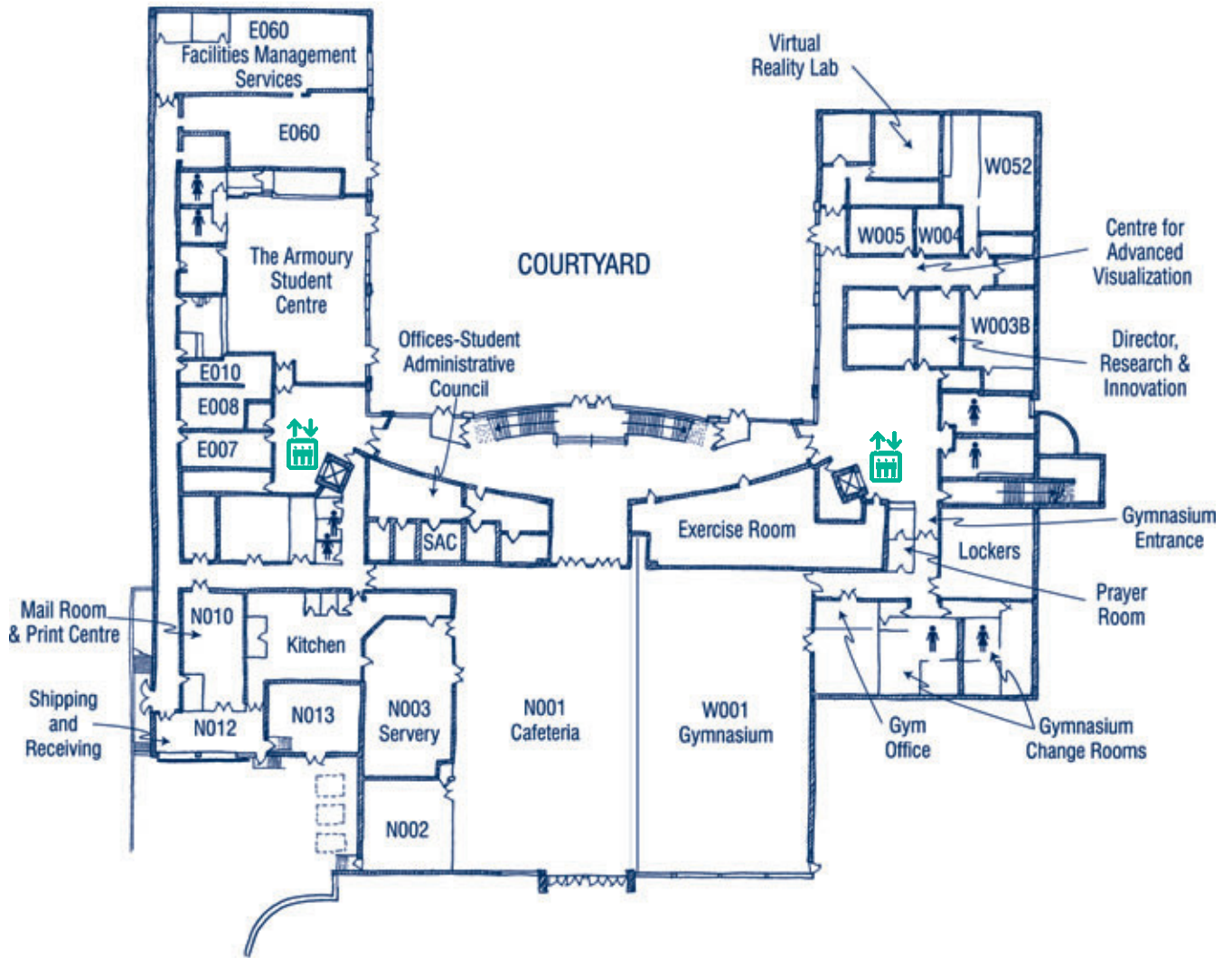


NIAGARA-ON-THE-LAKE CAMPUS

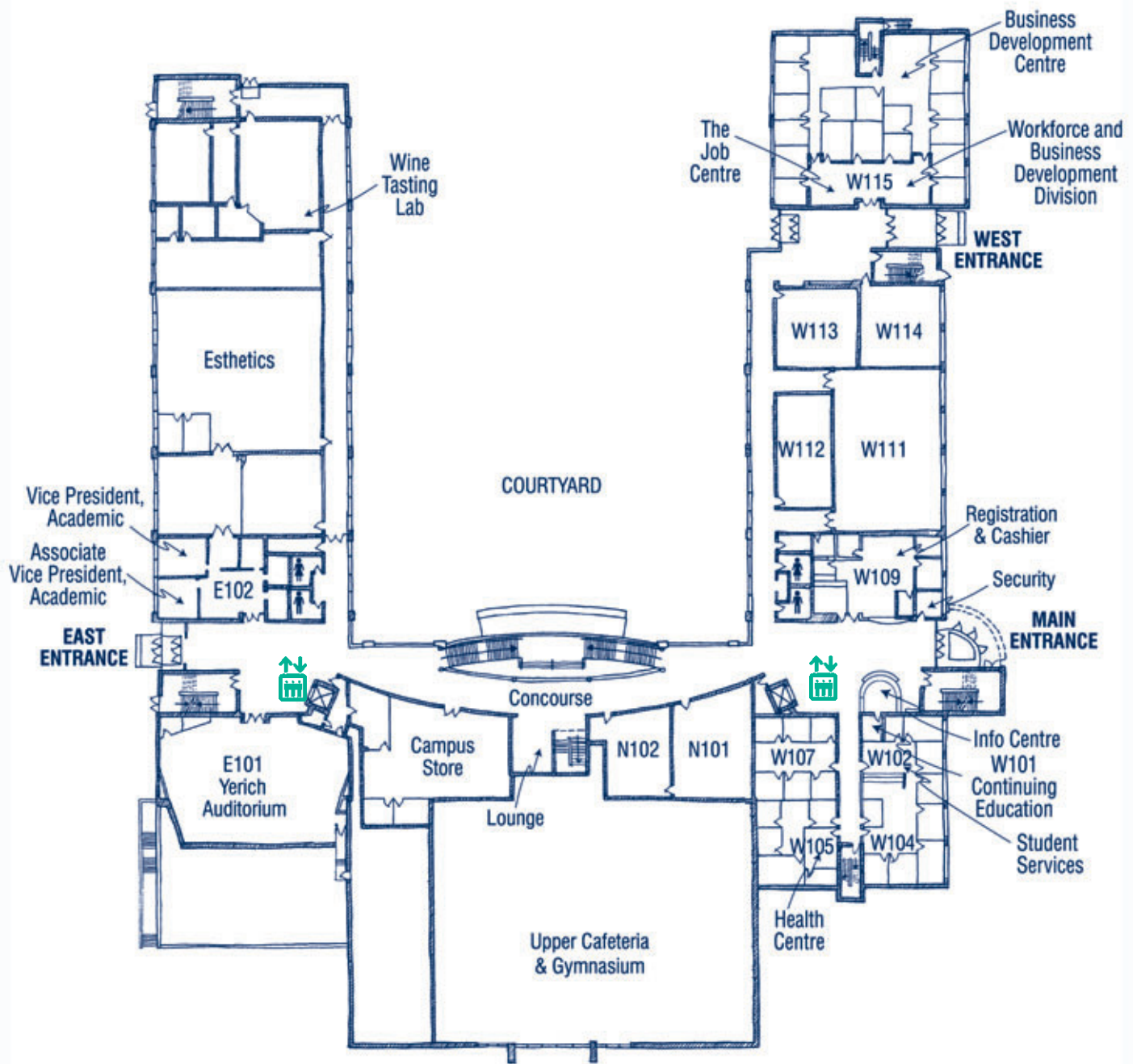
GUIDE

2007-2008



Lower Ground Floor

NIAGARA-ON-THE-LAKE CAMPUS GUIDE 2007-2008

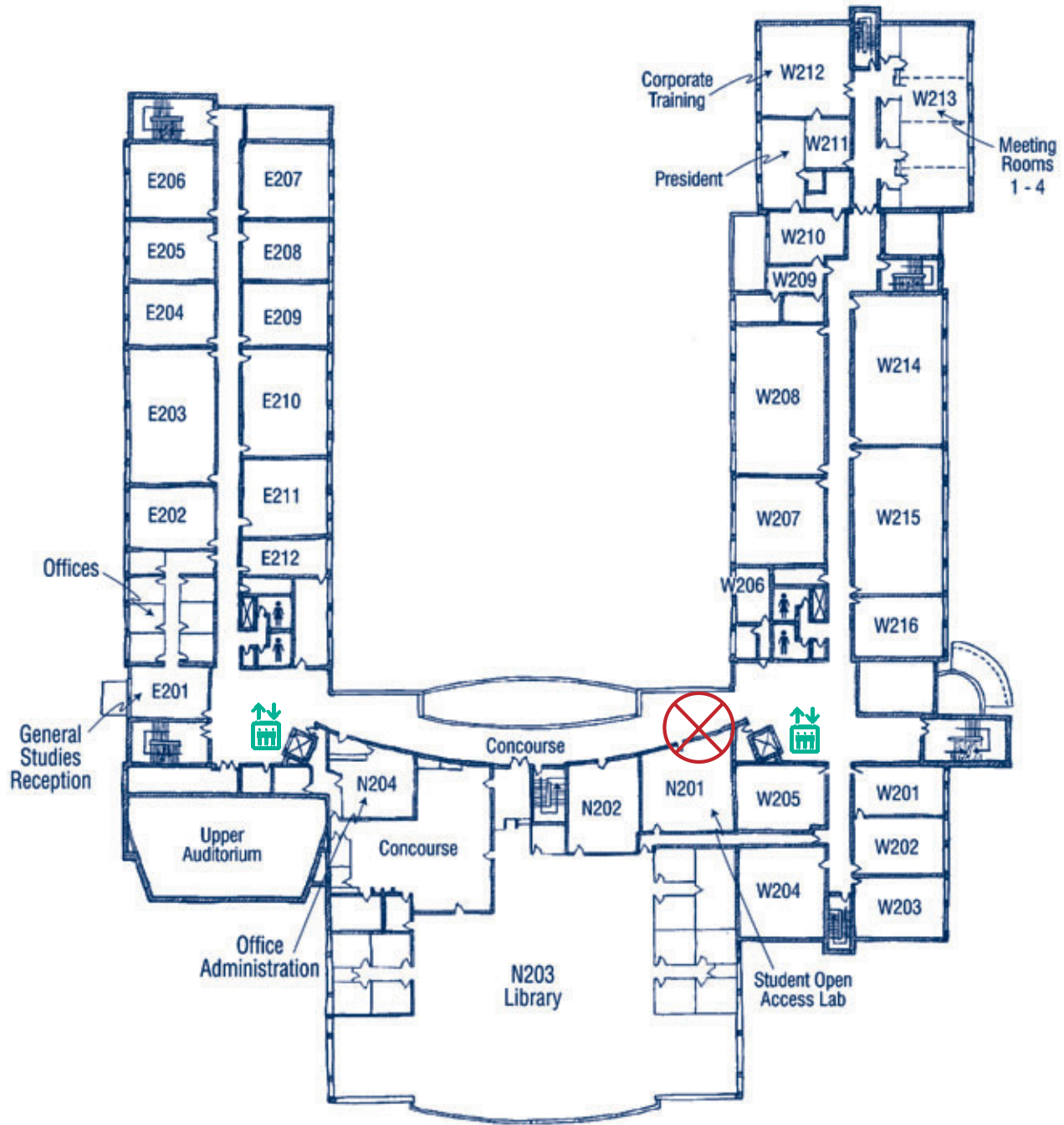


Ground Floor

NIAGARA-ON-THE-LAKE CAMPUS

GUIDE

2007-2008



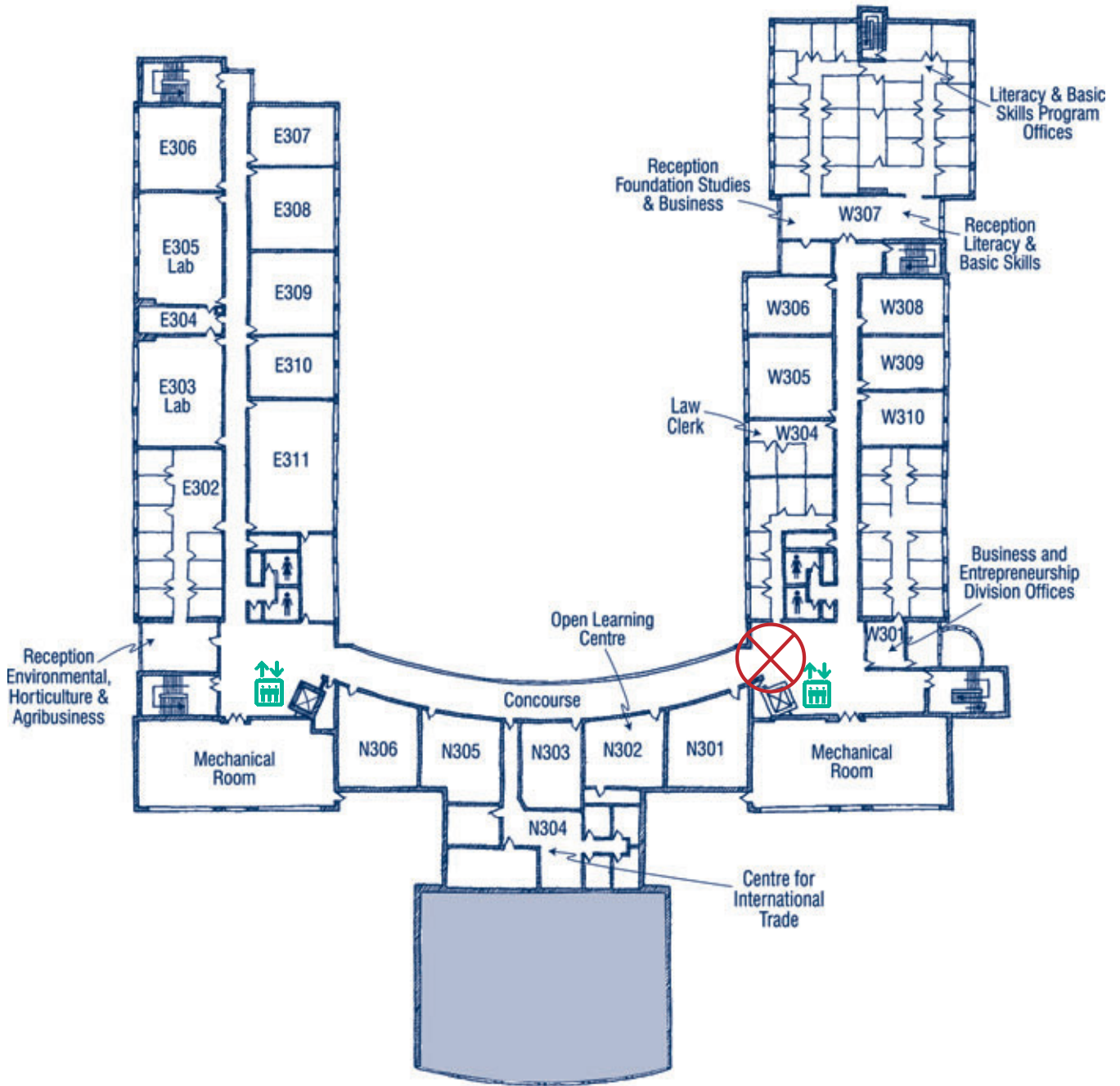
Second Floor

 Denotes Emergency Refuge Area

NIAGARA-ON-THE-LAKE CAMPUS

GUIDE

2007-2008



Third Floor

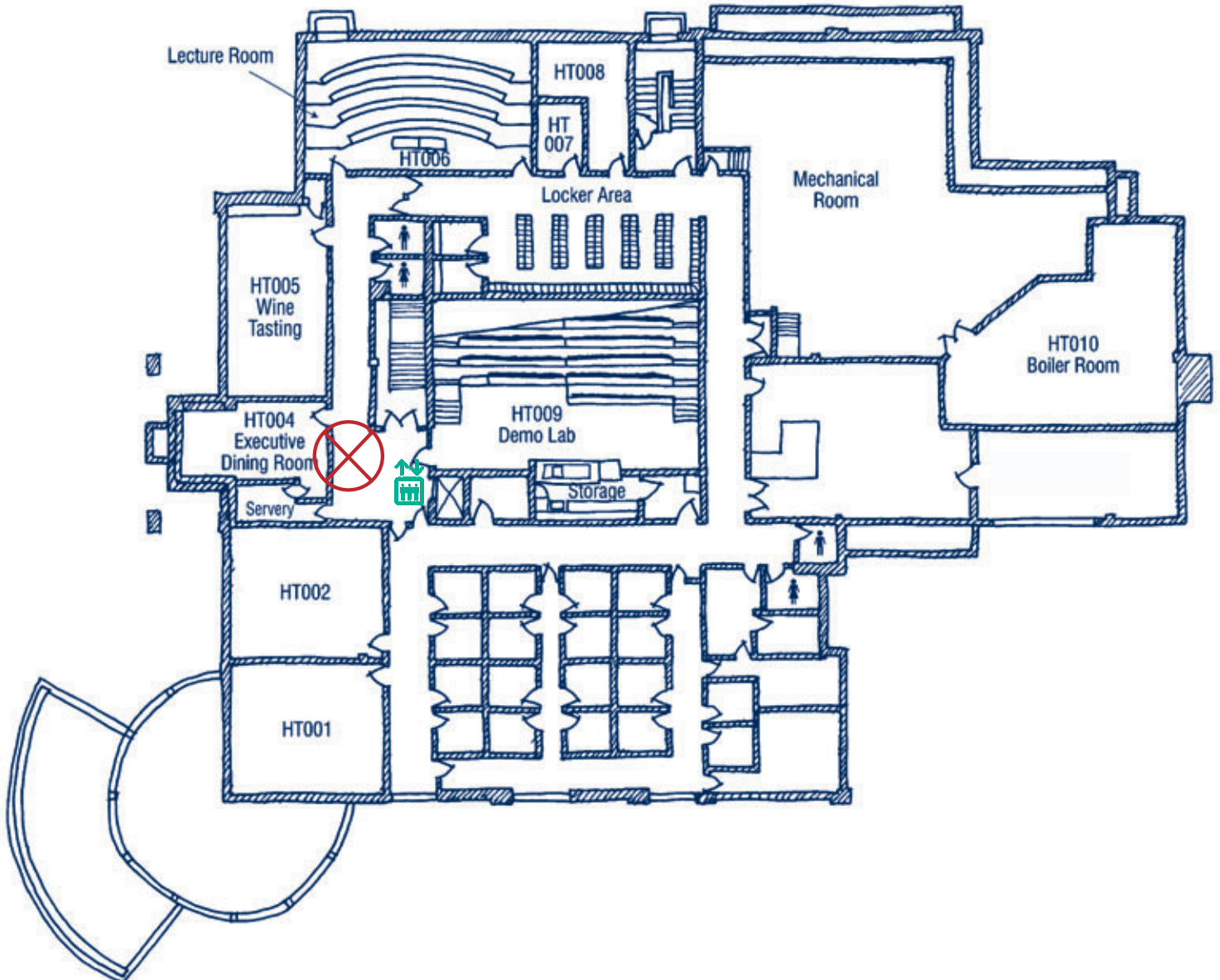
 Denotes Emergency Refuge Area

NIAGARA-ON-THE-LAKE CAMPUS

GUIDE

2007-2008

NIAGARA CULINARY INSTITUTE



Lower Ground Floor

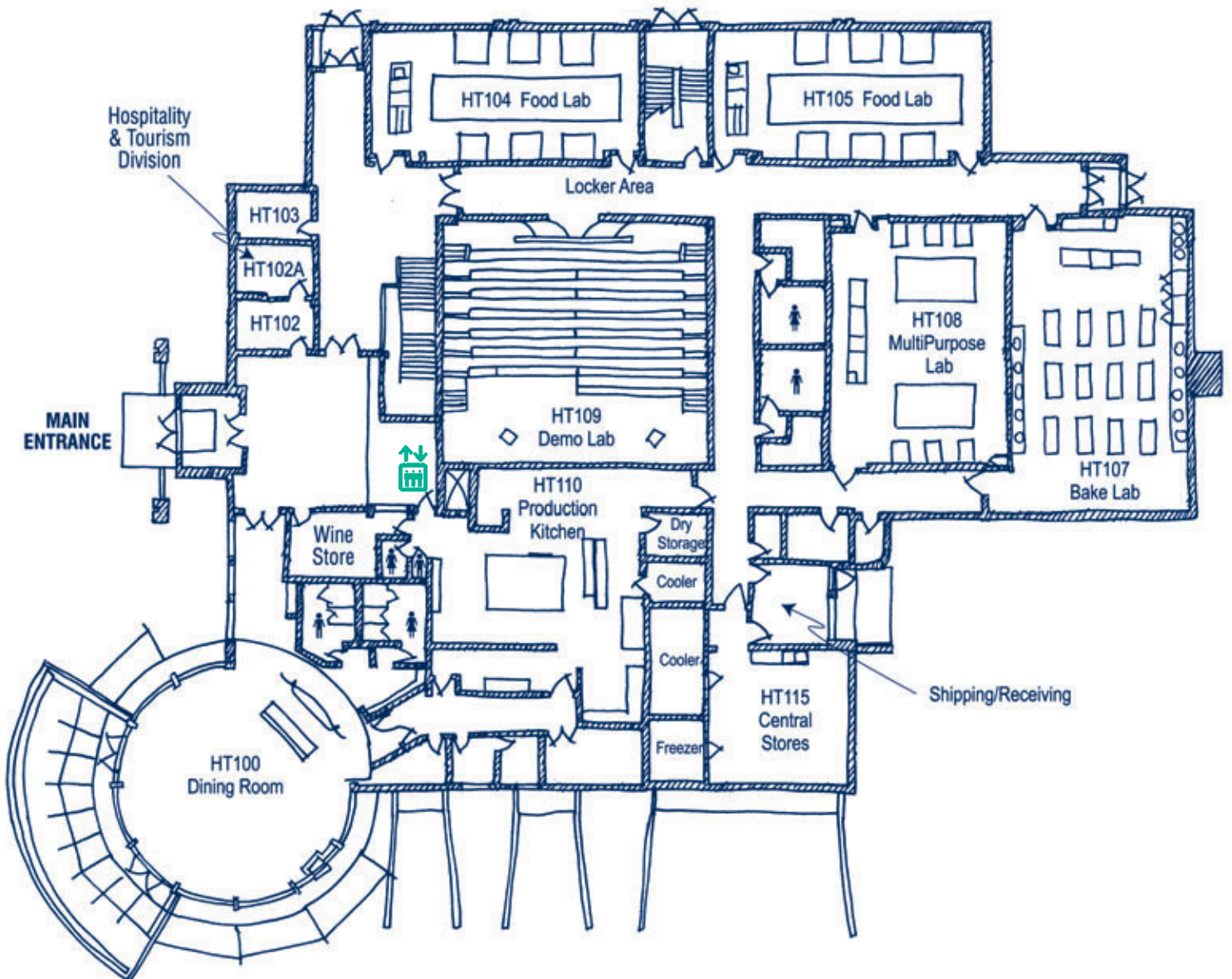
 Denotes Emergency Refuge Area

NIAGARA-ON-THE-LAKE CAMPUS

GUIDE

2007-2008

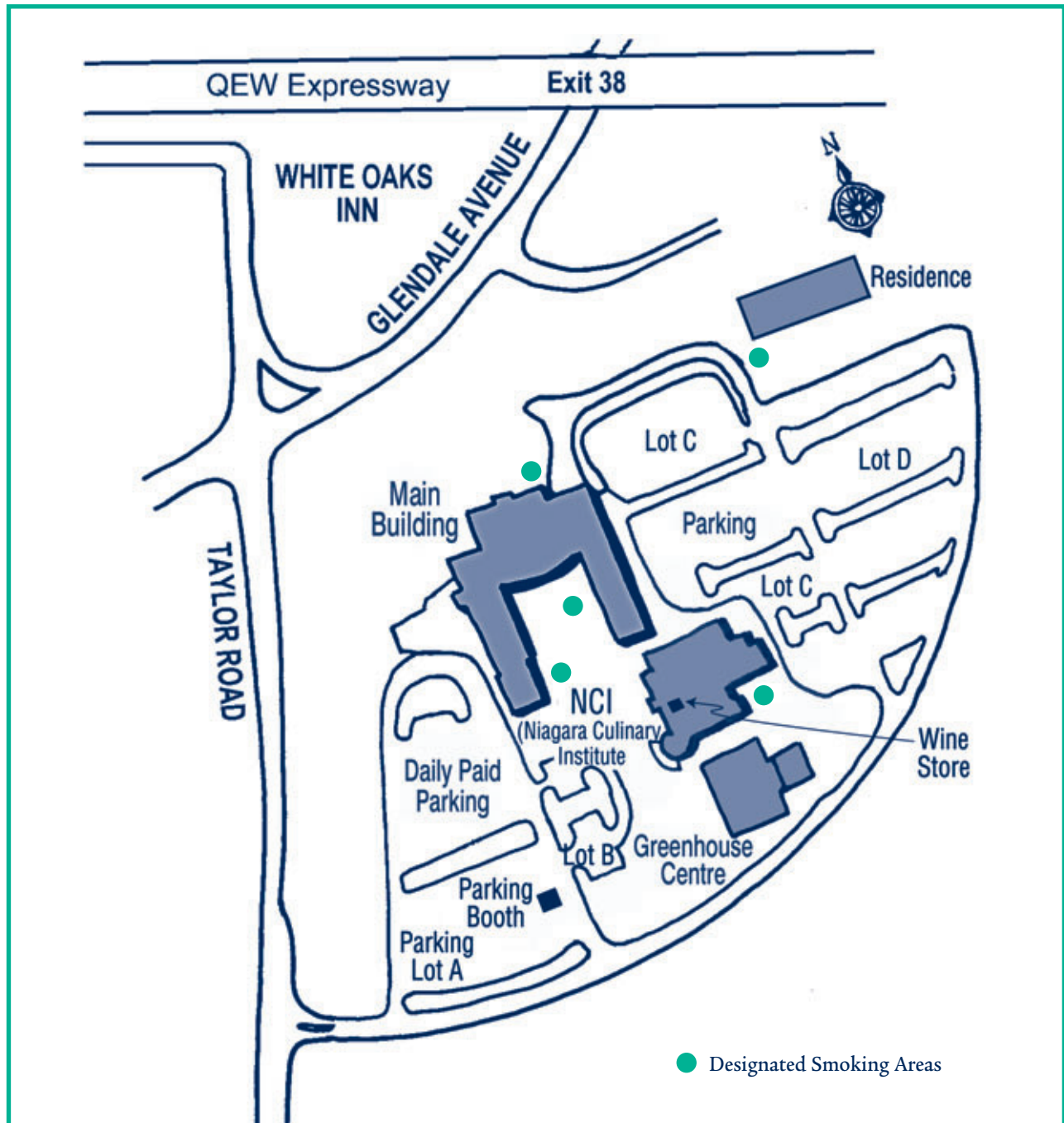
NIAGARA CULINARY INSTITUTE



Ground Floor

NIAGARA-ON-THE-LAKE CAMPUS GUIDE 2007-2008

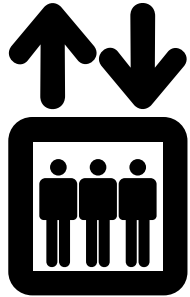
● For information call 905.641.2252, ext. 7559



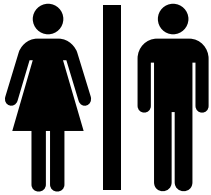
NIAGARA-ON-THE-LAKE
CAMPUS

www.niagaracollege.ca

LEGEND



Elevator



Men's Restroom | Women's Restroom



Handicap Parking

NOTL CAMPUS ROOM LOCATION LEGEND

ROOM LETTER

HT

N

S

E

W

BUILDING / ROOM LOCATION

Niagara Culinary Institute –
(Hospitality and Tourism Building)

Main Building – North Wing

Main Building – South Wing

Main Building – East Wing

Main Building – West Wing

EVACUATION PROCEDURES

In emergency situations, students with physical disabilities and impaired mobility will be provided with assistance by (Fire Rescue Crew) staff. You should follow the instructions of the Fire Wardens and/or Emergency Response personnel at all times.

- DO NOT use elevators in a fire emergency.
- At all times, know the nearest two (2) exits from the classroom, office of facility you are in.
- When on the main floor of a building, proceed to the nearest safe exit, taking along with you any personal possessions that are in your immediate care.
- When on a floor other than the main floor, proceed to a *refuge area once hallways have cleared enough to permit safe movements.
- Once in a refuge area, Fire Wardens will help to determine the safest option and will remain with you to ensure your safe exit from the building.
- If it is determined that a safe exit requires that you be carried up or down stairs, trained emergency personnel will attend to this task to ensure your safety.

Niagara-on-the-Lake Campus - Refuge Area Locations:

- When on the main floor of a building, proceed to the safest exit.
- Main Building located on the second and third floors in the Northwest corridors, opposite of N201 and W303.
- Niagara Culinary Institute (NCI) Building located on the lower floor near Executive Dining Room HT004, opposite of elevator.

* see campus maps for locations of emergency refuge areas – marked as a Red X Circle

Please note: The Greenhouse at the Niagara-on-the-Lake Campus is a single storey structure. In an emergency, students in this building should proceed to the nearest safe exit, as instructed by Fire Wardens. In Niagara College Residences, students are required to follow residence evacuation procedures.

If you have specific concerns or questions about emergency evacuations based on your particular disability, please contact your disability counsellor to discuss your concern.

Niagara College Welland Campus
300 Woodlawn Road, Welland
Simcoe Wing, SE102, ext. 7602
Tel: 905-735-2211 / 641-2252 / 374-7454
TDD: 905-735-5574 Fax: 905-736-6013

Niagara College NOTL Campus
135 Taylor Rd., Niagara-on-the-Lake
West Wing, W102, ext. 4171
Tel: 905-735-2211 / 641-2252 / 374-7454
TDD: 905-988-4320 Fax: 905-988-4302